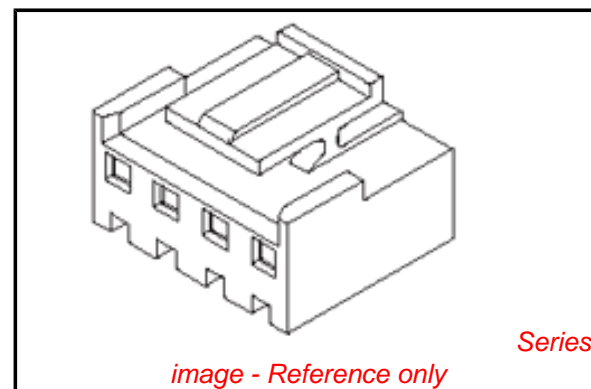


PLEASE CHECK WWW.MOLEX.COM FOR LATEST PART INFORMATION

Part Number: [0359770302](#)
Status: **Planned for Obsolescence**
Overview: [mv396](#)
Description: 3.96mm (.156") Pitch Wire-to-Board Housing, Positive Lock, 3 Circuits, PA Polyamide Nylon 6/6, UL 94V-2, Red, Glow Wire Compatible

Documents:

3D Model	Product Specification PS-35979-001 (PDF)
Drawing (PDF)	RoHS Certificate of Compliance (PDF)
Product Specification PS-35978-001 (PDF)	



Agency Certification

CSA	LR19980
TUV	R72090224
UL	E29179

General

Product Family	Crimp Housings
Series	35977
Overview	mv396
Product Name	MV-396™

Physical

Breakaway	No
Circuits (maximum)	3
Color - Resin	Red
Flammability	94V-0
Gender	Female
Glow-Wire Compliant	No
Keying to Mating Part	None
Lock to Mating Part	Yes
Material - Resin	Nylon
Number of Rows	1
Packaging Type	Bag
Panel Mount	No
Pitch - Mating Interface (in)	0.156 In
Pitch - Mating Interface (mm)	3.96 mm
Polarized to Mating Part	Yes
Stackable	Yes
Temperature Range - Operating	-25°C to +85°C

Electrical

Current - Maximum per Contact	7A
-------------------------------	----

Material Info

Reference - Drawing Numbers

Packaging Specification	PK-35977-001
Product Specification	PS-35978-001, PS-35979-001
Sales Drawing	SD-35977-001

EU RoHS

ELV and RoHS Compliant
REACH SVHC
 Not Reviewed
Halogen-Free Status

China RoHS



Need more information on product environmental compliance?

Email productcompliance@molex.com
 For a multiple part number RoHS Certificate of Compliance, [click here](#)

Please visit the [Contact Us](#) section for any non-product compliance questions.

Search Parts in this Series

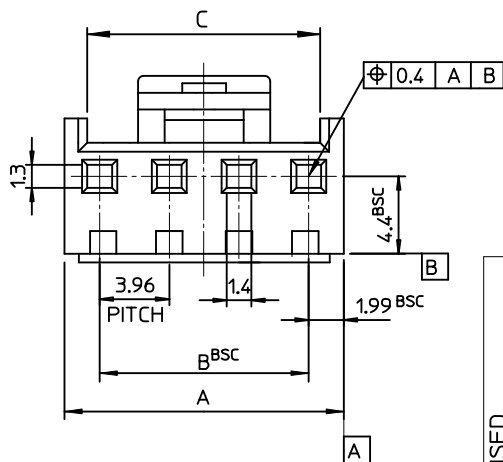
[35977Series](#)

Mates With

Wire-to-Board Header [35978](#) , [35979](#)

Use With

Wire-to-Board Terminal [35922](#)



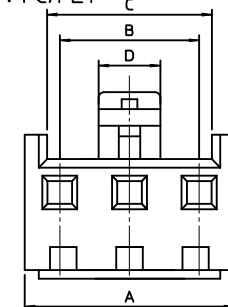
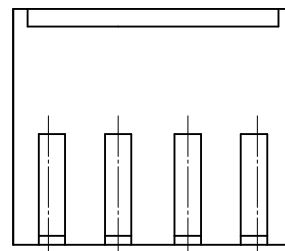
NOTES

- 1. USED WITH TERMINAL : 35922-9002
- 2. MATED WITH HEADER ASS'Y : 35978-**1*(PA66) 35978-**2*(PA66)

LEGEND
35977-****

- COLOR : 0 - WHITE
- 1 - BLACK
- 2 - RED
- 3 - YELLOW
- 4 - BLUE

MATERIAL 0 : PA66 (E) 9 : PC/PET
CURCUIT NO. (02,03,04...)



* 2~3 CIRCUITS ONLY *

19.9	56.88	55.44	59.42	3597715**	35977-15**	15
19.9	52.92	51.48	55.46	3597714**	-14**	14
19.9	48.96	47.52	51.5	3597713**	-13**	13
19.9	45.0	43.56	47.54	3597712**	-12**	12
19.9	41.04	39.6	43.58	3597711**	-11**	11
19.9	37.08	35.64	39.62	3597710**	-10**	10
17.7	33.12	31.68	35.66	3597709**	-09**	9
15.7	29.16	27.72	31.70	3597708**	-08**	8
13.7	25.20	23.76	27.74	3597707**	-07**	7
7.5	21.24	19.80	23.78	3597706**	-06**	6
	17.28	15.84	19.82	3597705**	-05**	5
	13.32	11.88	15.86	3597704**	-04**	4
	9.36	7.92	11.90	3597703**	-03**	3
3.5	5.4	3.96	7.94	3597702**	35977-02**	2
D	C	B	A	MAT'L NO	ENG NO.	CIRCUITS

REVISED EC NO: KOR2009-0137 DRAWN: JHPARK01 2009/05/21 CHKD: WY YANG 2009/05/21 APPR: YUNSIKKIM 2009/05/22	QUALITY SYMBOLS 	GENERAL TOLERANCES (UNLESS SPECIFIED) <table border="1"> <tr> <td></td> <td>mm</td> <td>INCH</td> </tr> <tr> <td>4 PLACES</td> <td>± ---</td> <td>± ---</td> </tr> <tr> <td>3 PLACES</td> <td>± ---</td> <td>± ---</td> </tr> <tr> <td>2 PLACES</td> <td>± ---</td> <td>± ---</td> </tr> <tr> <td>1 PLACE</td> <td>± 0.30</td> <td>± ---</td> </tr> </table>		mm	INCH	4 PLACES	± ---	± ---	3 PLACES	± ---	± ---	2 PLACES	± ---	± ---	1 PLACE	± 0.30	± ---	DIMENSION STYLE MM ONLY	SCALE 3:1	DESIGN UNITS METRIC	THIRD ANGLE PROJECTION
		mm	INCH																		
	4 PLACES	± ---	± ---																		
	3 PLACES	± ---	± ---																		
2 PLACES	± ---	± ---																			
1 PLACE	± 0.30	± ---																			
DESCRIPTION 3.96 PITCH W-T-B CONN. HOUSING	DRAWN BY YR.WI	DATE 1999/05/06	MOLEX INCORPORATED SD-35977-001																		
CHECKED BY JH.OH	DATE 1999/05/06																				
APPROVED BY CW.LEE	DATE 1999/05/06		MATERIAL NO. SEE TABLE	DOCUMENT NO. SEE TABLE	SHEET NO. 1 OF 01																
DRAFT WHERE APPLICABLE MUST REMAIN WITHIN DIMENSIONS	SIZE A3		THIS DRAWING CONTAINS INFORMATION THAT IS PROPRIETARY TO MOLEX INCORPORATED AND SHOULD NOT BE USED WITHOUT WRITTEN PERMISSION																		